

BETWEENTM

uPVC FRAMES


A Product of Sudhakar Pipes & Fittings



**Your window
to the world.**

Between

Is something that connects you to the world.

A young child with curly hair is looking out a window. The child is wearing a yellow and white top. The window is made of uPVC material. The background shows a view of trees and a building.

It's an interface or medium that brings you closer to the practical world. Between is something through which you look at the world. It's your viewpoint, and Between is your window to the world.

Relish the good of nature, not its residue.

Homes are devoid of their real purpose and value when something undesirable like noise, dust and pollution enter. And, only a good effective barrier can keep them away. Between is a window made of the proven uPVC material designed to please every home and allow only the good to pervade.



**Whatever the
challenge,
there's a window
to face it.**

IDEAL 2000®

Modern uPVC windows and doors made out of aluplast profiles are a clever investment for the future. IDEAL 2000® is the most substantial 3-chamber system with two levels of sealing and a 60 mm depth. The profile system offers the best possible price-performance ratio and a perfect economic efficiency. It is the right system for fixed, tilt only, tilt and turn casement openings.



IDEAL 4000®

With a 5 chamber system as a standard combination, double design variety in the sash (surface offset | half-surface offset), sound isolation up to 46 dB and a depth of 70 mm, the aluplast IDEAL 4000® windows offer excellent thermal insulation properties – delivering a range of windows today which satisfies the standards of tomorrow.



SLIDING SYSTEM 60mm & 80mm

The aluplast sliding window series with narrow design, replaceable seals and specially matched reinforcements for a good static value can be designed according to individual requirements. It is the best suitable system for windows as well as huge doors for balconies and terrace.



LIFT & SLIDE DOOR

With a smooth-running lifting mechanism even huge sliding element up to 3m and 70 mm depth, with large reinforcements for the highest degree of stability, can be moved very easily. The wide opening provides a connection with the outside without disturbing steps.



There's one for
every *outlook*,
pick what's yours.

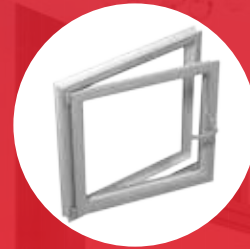


Between has a variety of **window and door types** that are classified owing to the way they are installed and opened.



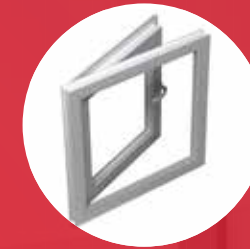
FIXED GLAZING

The glazing is inserted directly into the frame; there is no sash that could be opened



**CASEMENT,
*inward opening***

The sash opens inwards



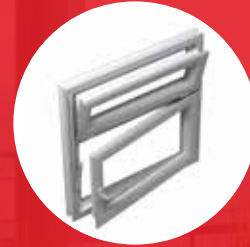
**CASEMENT,
*outward opening***

The sash opens outwards



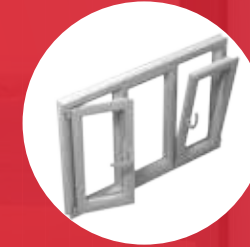
SLIDING

The sash slides freely on wheels to either side to open the window



TILT FUNCTION

The sash tilts inside to ventilate and let fresh air in



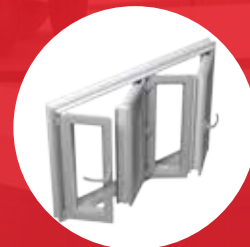
TILT AND TURN

The sash tilts for ventilation or completely opens inwards



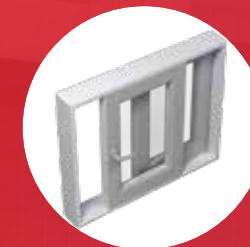
TILT AND SLIDE

The sash tilts for ventilation or slides for complete opening



BI-FOLD

Highest opening for large space, multiple sashes fold together by sliding on a rail



LIFT AND SLIDE

Large sashes with high insulation to have a great outside view

Frame your *view* with a *hue* that you like.

Color your life and choose your favorite from various colors. The system provider uses a special manufacturing technique to apply the décor lamination foil on the uPVC window profiles. This technique guarantees an even structure, a uniform color as well as maximum weather resistance and it meets the highest requirements regarding climatic influences. The colour choices are:

A circular swatch with a red border showing a dark brown wood grain texture.


Nut Tree

A circular swatch with a red border showing a medium brown wood grain texture.

Golden Oak

A circular swatch with a red border showing a dark reddish-brown wood grain texture.

Mahogany

A circular swatch with a red border showing a light grey metallic brushed texture.


*Aluminum
Brushed*



**Nature has no
expiry date,
then why should
a *window* have.**

Between is developed in line with well-founded market research and close cooperation with our partners to make them market-ready. Our products are certified by several German, European and International Institutes like **TÜV, IFT, RAL, SKZ** and tested in their own laboratory to guarantee persistent quality and reliability.

Many quality certifications for fire safety, bearing capacity, sound insulation etc. are available in compliance with European norms and international standards. Depending on the market and customer needs Between is able to offer appropriate products and meet ecological requirements. The unleaded profiles for windows and doors are recyclable and can be re-produced to profiles without deterioration of quality.



*Why **Between**
windows
will be your
first choice,
every time.*

Sustainability

- Between frames use lead-free PVC for all profiles
- Easy to recycle, thus preserve nature, especially tropical forests

Insulation and Energy Saving

- Perfect heat and cold insulation of Between frames conserves energy during all seasons
- Maximum wind resistance makes it ideal for high rise buildings and seaside locations
- Excellent for sound insulation, especially in the growing urban regions
- First-rate insulation values can be achieved in conjunction with modern glass

Minimal Maintenance

- Between uPVC frames are easy to clean using a mild detergent, such as simple soapy water
- Only a few hardware items of Between need occasional lubrication
- Any maintenance can be done without removing the frame from the wall

Durability and Resistance

- Between uPVC frames are efficient and durable for years without use of paint or any special maintenance
- Highly strengthened frame and sash resist unwanted outsider penetration
- Remain undeformed by moisture and temperature differences
- Resistant against termites
- Inhibits the growth of moulds, rust and corrosion as it doesn't hold moisture

- Creates a complete barrier from the outside world, decreasing harmful pollution, air-borne diseases and virus carrying insects

Cost Competitive

- The initial costs for Between uPVC windows are lower than the price for compatible good quality wooden and aluminum windows
- The value of housing can be increased by integration of Between window and door profiles

Design Capabilities

- Availability of a wide-range of glazing options to suit speciality needs
- Different combination of windows can be fabricated according to customer needs
- Available in various colors, inside and outside
- Suited for new buildings as well as renovation of existing houses





Acknowledged and approved by those who matter.

Lead-free profiles

Our profiles made of PVC-dryblend produced in our Aluplast plants are produced with CaZn-stabilization and are certified lead-free.


Thermal Transmittance

Certified by IFT Rosenheim for thermal performance of our windows, doors and shutters under EN ISO 1007-2 : 2003-10

Environmental Compatibility

Our profiles are classified environmentally safe as they do not contain formaldehyde and are free of CFC.
No PCBs added to material formulation.





*A name that's
familiar and
trusted under
several roofs.*

**Between is a product from the
Sudhakar Group.**

Sudhakar Group, located in Suryapet, Telangana, India is a significant player in PVC, CPVC and HDPE pipe sector. Established in 1971, the group is a closely held and tightly knit family business promoted by a visionary entrepreneur, Shri Meela Satyanarayana.

With its main focus in Telangana, Andhra Pradesh, Karnataka and Odisha, the group has a nationwide distribution network and is a direct and indirect exporter of PVC and HDPE pipes to neighboring countries and African countries.

By being innovative and quality conscious, Sudhakar Group distinguished itself from other organizations as a company having an inbuilt culture of top class customer care.

All of the group's plants are ISO certified with state-of-the-art laboratory facilities. The total installed capacity is 90000 MT per annum. Apart from the vast dealer network, the group's major clients include Central and State governments, several PSUs (ECIL, BHEL etc) and private sector companies (L&T, GMR, LANCO, TATA, Reliance etc).

Sudhakar now has progressed from strength to strength, and has bagged many prestigious awards, millions of happy and satisfied customers and attained leadership in the field of PVC, CPVC & HDPE Pipes and Fittings.

A product of

SUDHAKAR
PIPES & FITTINGS

Technology Partner



Between uPVC Frames

Plot No. 16/i, Road No. 7,

IDA Nacharam, Hyderabad – 500076

Phone No. : +91 7729988981 | +91 7729988982

Website: www.between.asia | email: info@between.asia